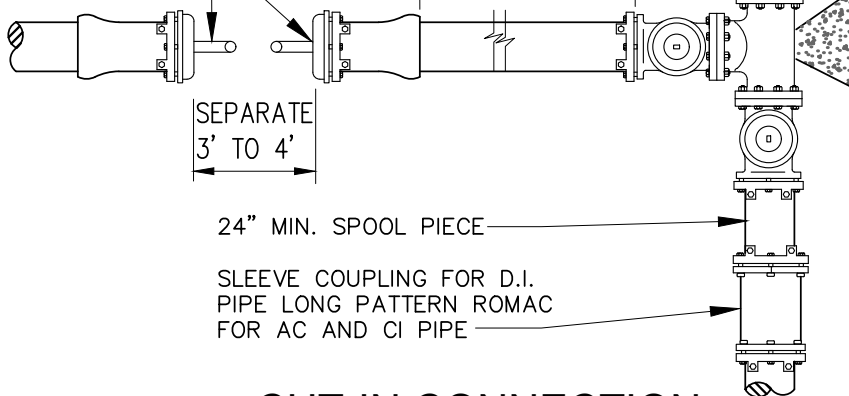


INSTALL 2" DIA. TEMP BLOW OFF FOR 8" DIA. AND SMALLER AND 3" FOR LARGER THAN 8" DIA.

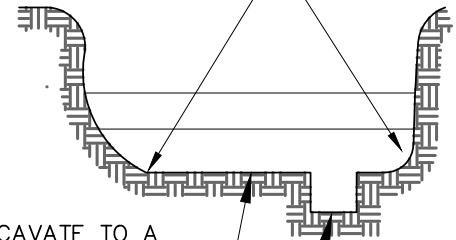
PIPE MAY DIRECTLY CONNECT AND EXTEND OUT OF THE STREET PER CONDITIONS IN NOTE 11. ALL PIPE AND FITTINGS SHALL BE RESTRAINED JOINTS. MAX LENGTH 25' UNLESS APPROVED.



CUT-IN CONNECTION

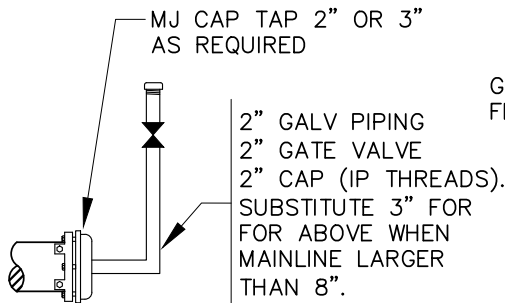
NOT TO SCALE

LINE EXCAVATION WITH VISQUEEN TO KEEP DRAIN WATER CLEAN



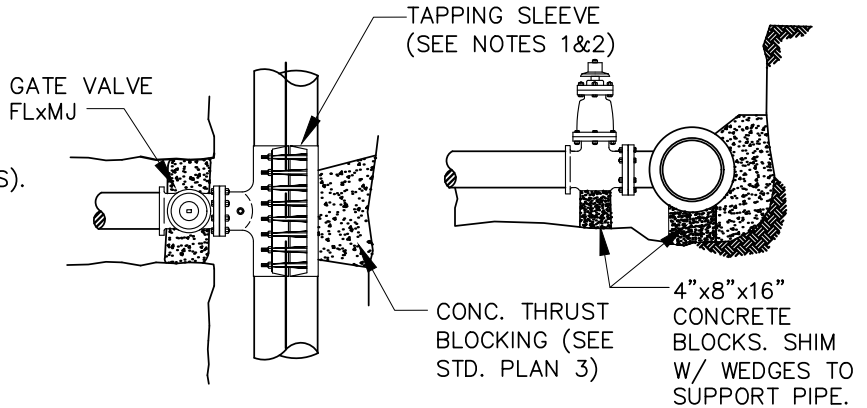
TRENCH PREPARATION

NOT TO SCALE



TEMP BLOW-OFF

NOT TO SCALE



TAPPED CONNECTION

NOT TO SCALE

NOTES:

1. TAPPED CONNECTIONS NOT ALLOWED WITHOUT SPECIFIC APPROVAL FROM THE DISTRICT.
2. NO CONNECTION WILL BE ALLOWED UNTIL ALL PRESSURE TESTING IS COMPLETED AND SATISFACTORY BACTERIOLOGICAL TEST RECEIVED.
3. TAPPING SLEEVE TO BE STAINLESS STEEL FOR AC PIPE AND EPOXY COATED STEEL FOR DUCTILE OR CAST IRON PIPE. CLOSEST EDGE OF TAPPING SLEEVE MUST BE 3' MIN. FROM COUPLING ON AC PIPE.
4. TEMP BLOW OFF'S MUST BE PROTECTED FROM DAMAGE. PLACE IN TRAFFIC BOX. TEMP BLOW OFFS IN PUBLIC R/W AREAS SHALL BE PLACED OUT OF PAVING. PROVIDE 2.5" MNST FIRE HOSE CONNECTIONS. SEE DETAIL ABOVE.
5. ALL MJ JOINTS TO BE MEGALUG OR EQUAL.
6. SIMILAR TEMP B.O. REQUIREMENTS FOR TAPPED CONNECTIONS. LOCATE BLOW OFF OUT OF ASPHALT WHEN POSSIBLE.
7. ALL PIPE FITTINGS AND OTHER COMPONENTS USED IN CONNECTIONS AND THE STUB ON TO SITE SHALL BE STERILE SWABBED WITH PIPE SIZE FOAM PIG AS PART OF THE PROJECT PIGGING REQUIREMENTS. CONNECTIONS SHALL BE TESTED UNDER FULL LINE PRESSURE PRIOR TO BACKFILL. THE STUB ON TO SITE SHALL BE PRESSURE TESTED AT 200PSI IN THE PRESENCE OF THE DISTRICT INSPECTOR.



DAVID EVANS AND ASSOCIATES INC.

STANDARD DETAIL

CONNECTION REQUIREMENTS



KING COUNTY WATER DISTRICT NO. 90

Rev. Date 11/12/21

DETAIL NO.

11