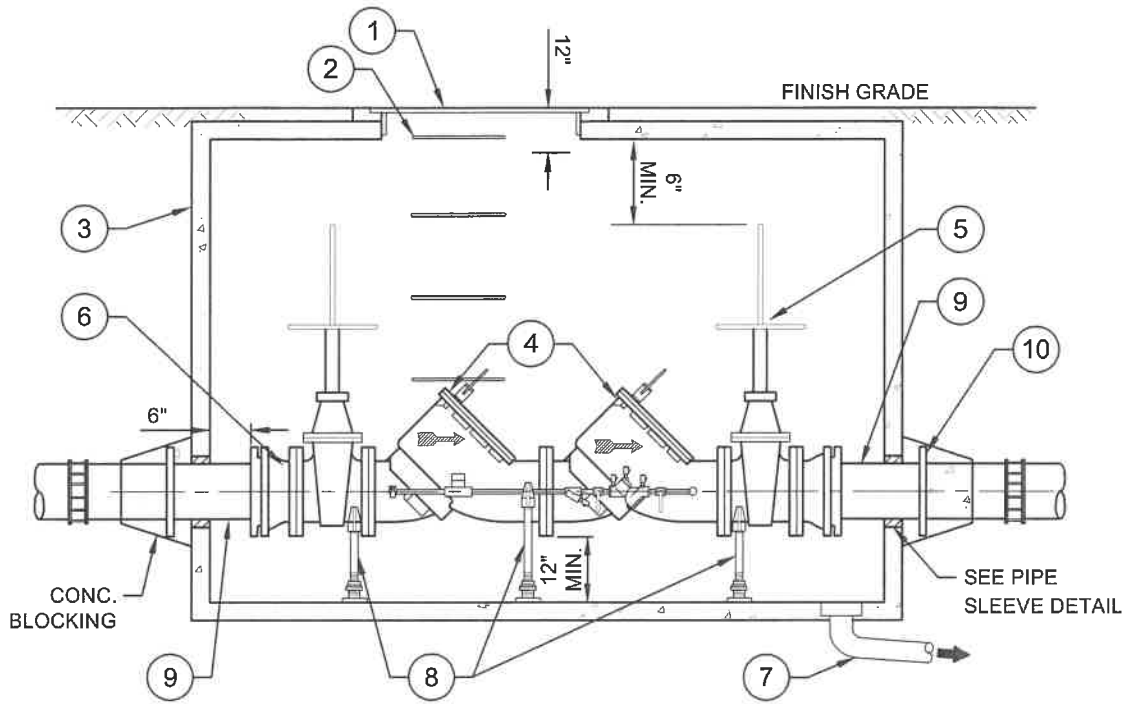
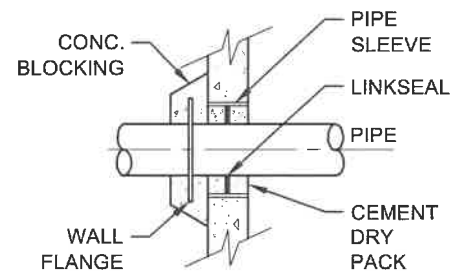


PLAN



ELEVATION



PIPE SLEEVE DETAIL

SEE SHEET 2 FOR ADDITIONAL NOTES AND MATERIALS

SHEET 1 OF 2



**DAVID EVANS
AND ASSOCIATES INC.**

STANDARD DETAIL

NTS

**DOUBLE CHECK DETECTOR
ASSEMBLY (DCDA)**



Water District No. 90

Rev. Date
04/2025

DETAIL NO.

23A

PIPE SIZE	VAULT SIZES			
	CATALOG #	VAULT #	COVER #	BASE #
3" & 4"	575-LA	575-BL	57TL-30C	575-BL
6" & 8"	4484-LA	4484-ML	4484TL-30C	4484-BL
10"	5106-LA	5106-ML	5106TL-30C	5106-BL

GENERAL NOTES:

1. SHOP-COAT ALL INTERIOR METAL INCLUDING PIPE, FITTINGS, AND PIPE STANDS WITH TWO COATS OF FARWEST, BLUE, QUICK-DRY ENAMEL, PART NO. 250-1-01-K-04 AS APPROVED BY THE ENGINEER. APPLY PER MANUFACTURERS INSTRUCTIONS. SAND BLAST TO REMOVE EXISTING COATINGS AND PAINT PRIOR TO INSTALLATION, THEN TOUCHUP AS REQUIRED.
2. THE ABOVE VAULT SIZES WERE SUPPLIED BY UTILITY VAULT CO. AS A REFERENCE FOR REQUIRED VAULT DIMENSIONS. SHOP DRAWINGS SHALL BE SUBMITTED FOR APPROVAL.
3. ALL ACCESS COVERS MUST BE MARKED "WATER", AND BE LOCKING, AND TRAFFIC BEARING AS REQUIRED BY THE DISTRICT. & 1-3/4" HOLE - 9" OFF CENTER AND THREE (3) TAPPED 5/8" HOLES. SQUARE HATCH MAY BE USED, SUBJECT TO APPROVAL BY THE DISTRICT.
4. CLASS 52 DI PIPE IS REQUIRED.
5. ALL BRASS FITTINGS SHALL CONFORM TO AWWA C800 (ALL BYPASS PARTS AND PIPING).

MATERIAL LIST

- | | |
|--------------------|---|
| ① HATCH | CAST IRON MANHOLE OR GALV. STEEL HATCH IN TRAFFIC AREAS (SEE #3 ABOVE) |
| ② LADDER RUNGS | 3/4" GALV. BAR AT 12" O.C. GROUTED OR FABRICATED GALVANIZED. STEEL LADDER SECURED AT TOP AND BOTTOM |
| ③ CONCRETE VAULT | SUBMIT DETAILS FOR APPROVAL (SEE TABLE ABOVE) |
| ④ DETECTOR | DCDA MUST BE APPROVED FOR INSTALLATION IN WASHINGTON STATE. TYPE SHALL BE APPROVED BY THE DISTRICT. |
| ⑤ VALVE | TWO EACH, AWWA C515-01 (DI BODY AND BONNET) AND AWWA C550-05 FLxMJ W/ RESTRAINTS OS&Y GATE VALVES W/ HANDWHEEL. MUST BE LOCATED INSIDE OF VAULT. |
| ⑥ COUPLING ADAPTOR | TWO EACH, CI FLxMJ COUPLING ADAPTORS W/ RESTRAINTS |
| ⑦ FLOOR DRAIN | 4" PVC, SLOPED TO STORM SEWER OR DAYLIGHT TO DRAINAGE DITCH. ALTERNATE: SUMP PUMP ALTERNATE MUST BE APPROVED BY THE DISTRICT AND WILL BE ALLOWED ONLY IF DAYLIGHT DRAIN MUST BE EXTENDED OVER 300 FEET. |
| ⑧ PIPE STAND | ADJUSTABLE STANDON PIPE SUPPORT AND BASE BOLTED TO FLANGE |
| ⑨ WATER MAIN | CLASS 52 DI PIPE WITH RESTRAINED JOINTS |
| ⑩ WALL FLANGE | TWO EACH |
| ⑪ METER | DETECTOR BYPASS METER MUST BE NEPTUNE MACH 10 REGISTERING IN CUBIC FEET |

SEE SHEET 1 FOR ADDITIONAL DETAILS

SHEET 2 OF 2

File Path: 4/24/2025 1:17 PM Rev: Jack Knapik
 Save Date: 4/24/2025 1:17 PM Rev: Jack Knapik
 File Path: P:\WORK\DWG\00000000\1\6800\INFO\Rev\Standard\Detail\DCDA\DCDA.DWG



**DAVID EVANS
AND ASSOCIATES INC.**

STANDARD DETAIL

NTS

DOUBLE CHECK DETECTOR ASSEMBLY (DCDA)



Water District No. 90

Rev. Date
04/2025

DETAIL NO.

23B