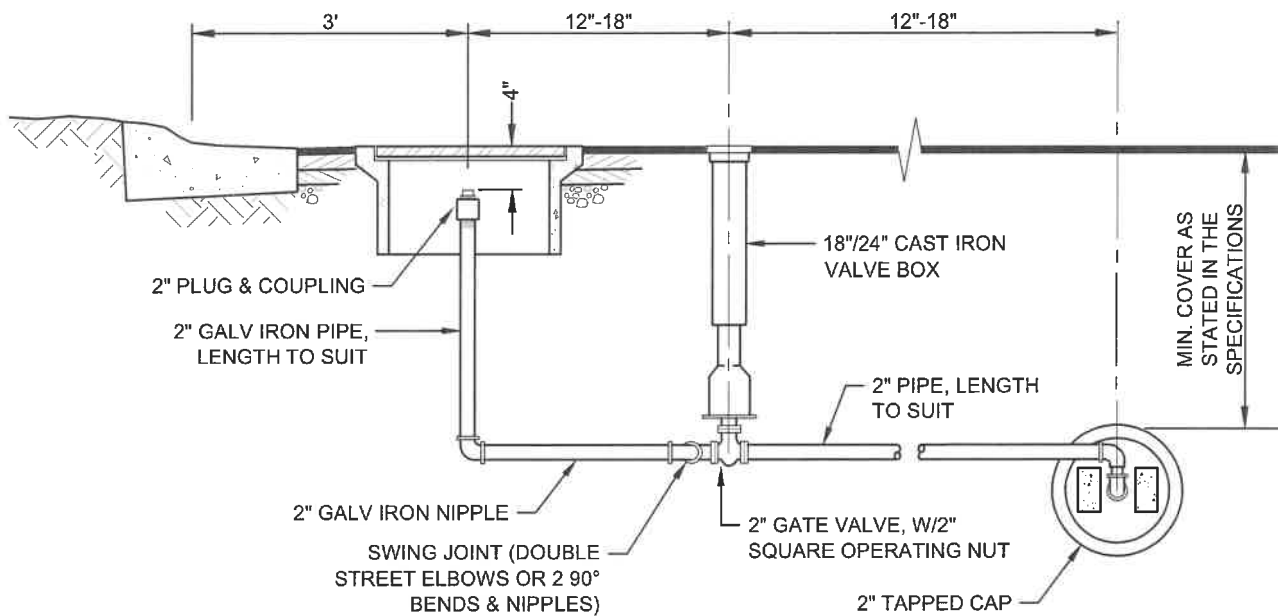


PLAN



ELEVATION

NOTES:

1. LOCATE BLOW OFF ASSEMBLY AS CLOSE AS POSSIBLE TO MAIN.
2. ALL PIPE AND FITTINGS BETWEEN MAIN & GATE VALVE SHALL BE WATERWORKS BRASS.



**DAVID EVANS
AND ASSOCIATES INC.**

STANDARD DETAIL

NTS

**2" BLOW OFF ASSEMBLY
FOR 6" AND SMALLER
MAINS-IN PAVING**



Rev. Date
04/2025

DETAIL NO.

8



1. LOCATE BLOW-OFF AS CLOSE AS POSSIBLE TO MAIN.
2. ALL PIPE & FITTINGS BETWEEN MAIN & GATE VALVE SHALL BE WATERWORKS BRASS CONFORMING TO AWWA C800.
3. THE GROUND WITHIN 3' RADIUS OF BLOW-OFF SHALL BE GRADED UNIFORMLY.
4. SWING JOINTS SHALL BE DOUBLE STREET ELBOWS OR 2 - 90° BENDS & NIPPLES.



**DAVID EVANS
AND ASSOCIATES INC.**

STANDARD DETAIL

2" BLOW OFF ASSEMBLY
FOR 6" AND SMALLER
MAINS-OFF PAVING

NTS



Water District No. 90

Rev. Date 04/2025
DETAIL NO.

DETAIL NO.

9